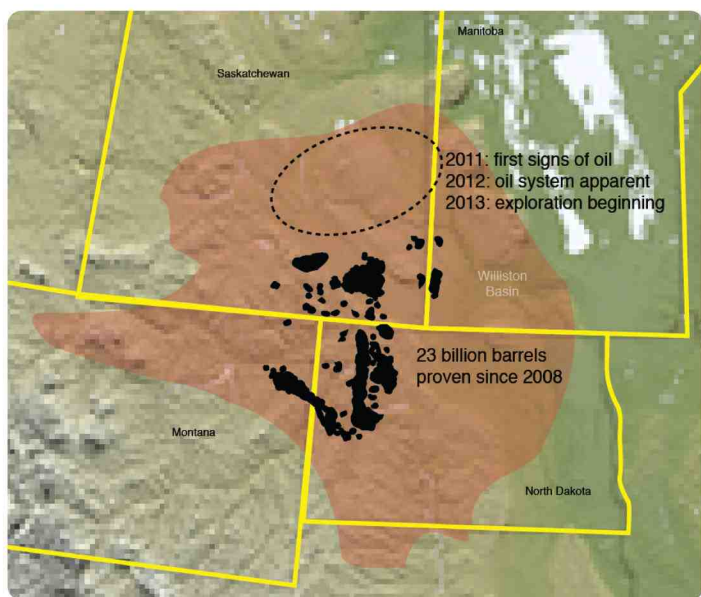




Oil in the Northern Williston Basin, Saskatchewan



Williston Basin (modified from Ron Blakey)

A new oil system in the northern Williston Basin is being explored by Saturn Minerals Inc. Discoveries related to this new system were first discovered in 2011 after a series of oil seeps were identified. Subsequent discoveries of source rock, reservoir rock, cap rock and additional shows of live oil have raised the profile of the new oil system which is located in central and eastern Saskatchewan.

In late 2012, Saturn Minerals partnered with Vector Exploration Inc. which was founded by the former executive team of Reliable Energy Corp. which was sold to Crescent Point Energy Corp. in 2012. The Vector Team brings first-hand experience in Williston Basin oil systems and together with Saturn are conducting first seismic surveys to identify potential oil pools.

Summary

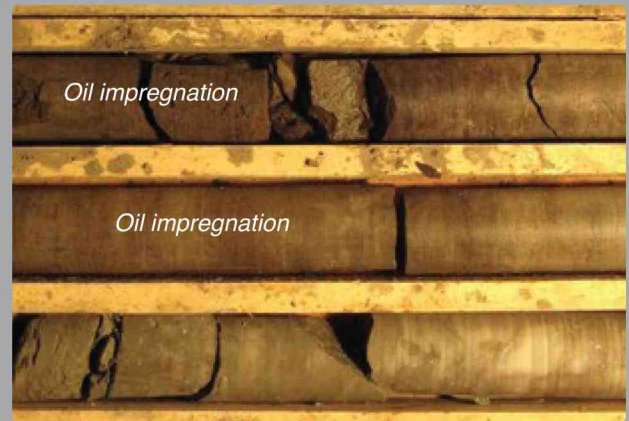


Middle Devonian Time (modified from Ron Blakey)

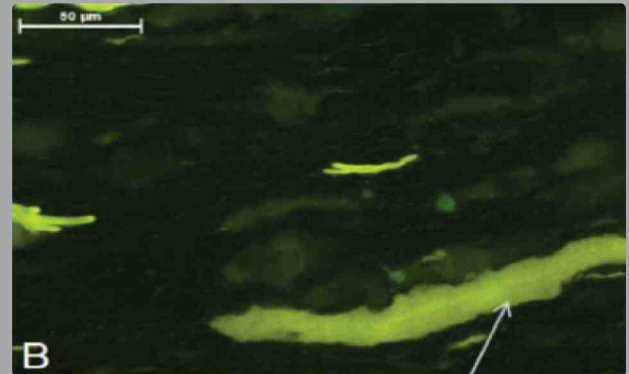
- ▶ High quality source rock: TOC from 7 to 14%
- ▶ Surface and sub-surface oil seeps identified
- ▶ Excellent reservoir rock: porosity from 20 to 28%
- ▶ Two potential plays, Devonian and Ordovician
- ▶ Low cost exploration wells, vertical to +/- 1000 m
- ▶ Large structures hosting potential traps
- ▶ Large land base, 370,000 acres with exclusive oil & gas rights from surface to basement
- ▶ High impact oil play, low exploration costs coupled with high netbacks and expert local partners

Description of Play

- **Live oil & oil seeps**
2010: wildcat well, oil at the shaker in three zones
2010: multiple surface oil seeps documented
2010: oil seep encountered during coal exploration
1997: oil seeps encountered during zinc exploration
- **Oil source rock**
World class source rock discovered: "Rat Creek Shale"
7 – 14% TOC, oil-prone, (Winnipegosis Formation)
- **Reservoir rock**
world class reservoir with signs of live oil
"Armit Dolomite" 28% porosity, (Souris River Formation)
- **Cap rock**
thick, tight limestone widespread above reservoir
"Upper Harris Limestone" (Souris River Formation)
- **Source rock maturity**
deep basin system over 1000m, local thermal gradient
extremely favourable for source rock maturity
- **Trap & migration**
2D seismic program underway over "Porcupine
Trough" system of graben-and-horst



Sub-surface oil seep, Armit Dolomite Reservoir, 2010

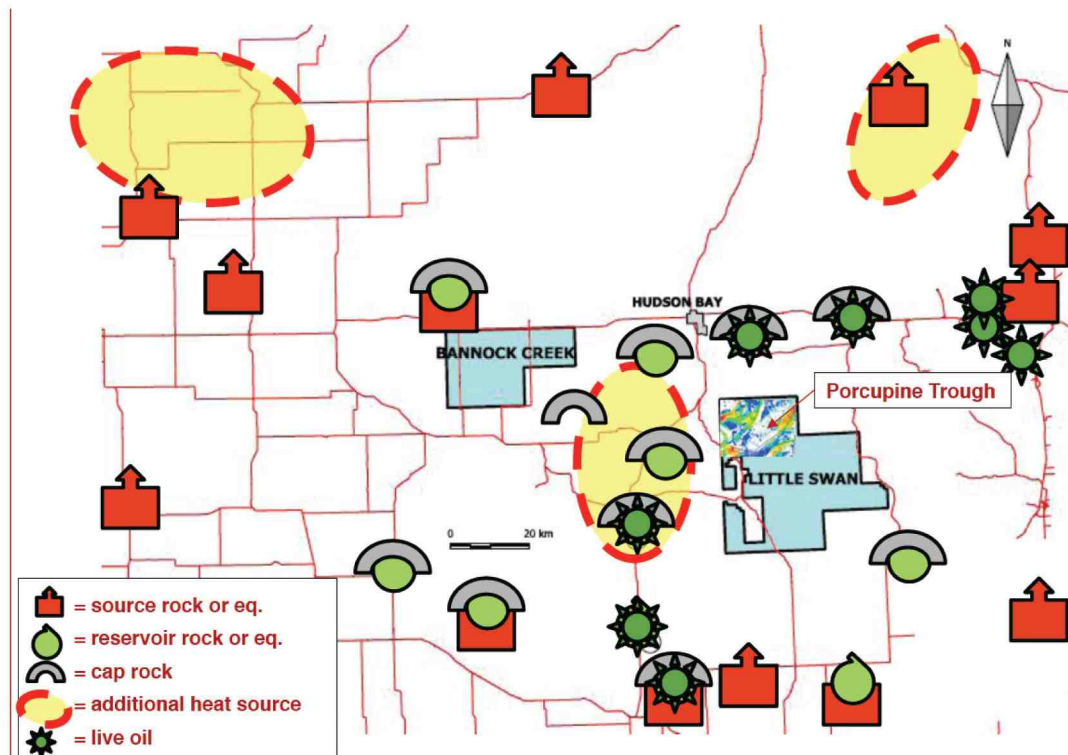


Rat Creek Shale source rock, oil-prone, 14% TOC

Area Overview

Oil in the northern Williston Basin

The northern Williston Basin in Saskatchewan is underlain by a thick succession of sedimentary geology with many of the same formations hosting oil & gas in the central and southern parts of the basin. Exploration of the northern Williston Basin is revealing increasing potential for the same and similar oil systems.



Contact

Suite 325 - 744 West Hastings Street
Vancouver, BC, Canada V6C 1A5
+1 (604) 685 6989

This brochure includes forward-looking statements as well as historical information. Forward-looking statements include, but are not limited to, Saturn Minerals Inc.'s continued advancement of its minerals exploration, development and production programs. Saturn Minerals Inc. expressly warns readers not to rely on the information herein for investment or other related purposes. Accordingly, any use of this information is at their own risk and without the liability to Saturn Minerals Inc. The information contained herein is not solicitation to purchase securities in the capital stock of Saturn Minerals Inc.